



Cal-XCell

Swine Lab management software

Cal-XCell Swine Lab Management Software

5000 doses



©2007 IMV Technologies, all rights reserved.

Serial number:

Art. number: 020290

WORLD LEADER IN REPRODUCTION BIOTECHNOLOGIES

Boar management in-situ (in production)

Semen production management

Single sire or pooling process

Pool traceability

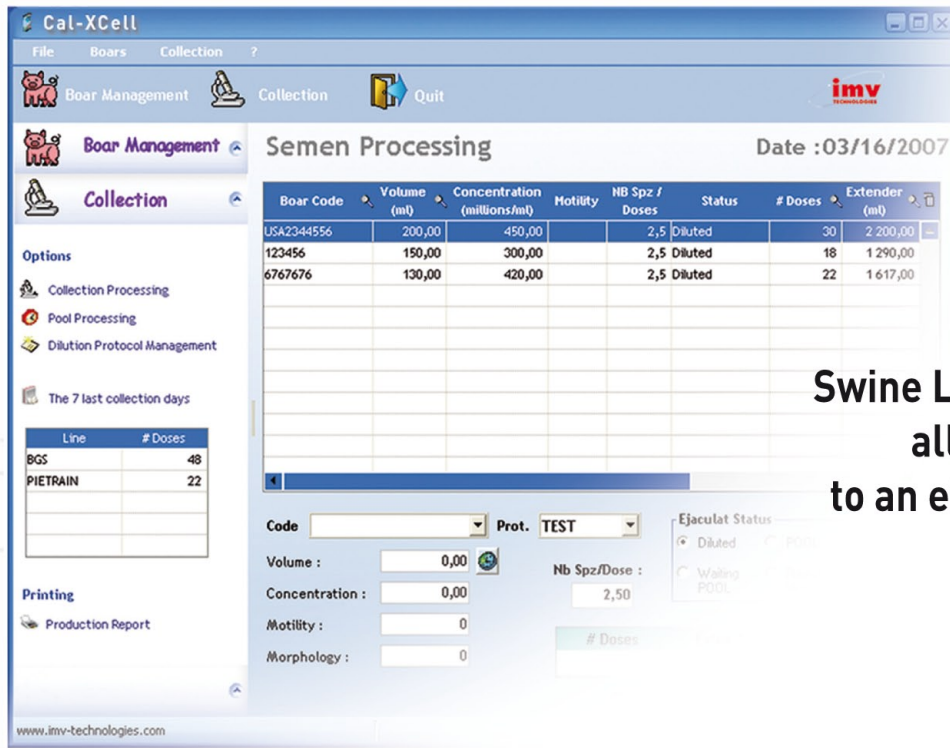
Data exportable to 5 different formats
(Word, Excel, HTML, PDF, XML)

WORLD LEADER IN REPRODUCTION BIOTECHNOLOGIES



www.imv-technologies.com

Cal-XCell



Swine Lab Management Software allows the user access to an efficient recording system

- A system of swine management software designed for small & mid-size boar studs
- Boar management in-situ (in production)
- Semen production management
- Single sire or pooling process
- Pool traceability
- Multiple reports available
- Data exportable to 5 different formats (Word, Excel, HTML, PDF, XML)
- Reports can be e-mailed automatically
- Peripheral connections: scale and Accuread
- Touchscreen compatible