



Highlights

Technical specifications

Compact

- > 670 x 300 x 500 mm / 26.4 x 11.8 x 19.7 inches (LxWxH)
- > Weight: 12 kg / 26.5 lbs

Power supply

- > Low-voltage powered equipment

High performance

- > Print speed: 18,000 straws/hr
- > Roller distribution with stepper motor

Straw printing modes

- 3 print qualities: Eco, Standard and HQ*
- 3 fonts*
- Font sizes from 13 to 24*
- Bold, italic* and bold/italic selection*

- Bar code printing
- Mini and medium straw printing
- Embryo straw printing 133mm (Ref. 006300 & 005592)
- Printing of identification rods

* Only available with IRIS Compact Inkjet (Ref. 028865)


Maintenance and compatibility

- Low maintenance
- No daily cleaning

Compatible with  SMILE (or other laboratory software)



IRIS, your printing solution offers many advantages:

- No daily cleaning
- Consistency and clarity in printing
- Ultra compact and ergonomic ink jet
- Adaptable for mini and medium straws
- Anti-jamming system by sequential distribution
- Supervision software included and compatible with 



References

IRIS Compact Ink Jet

IRIS with Compact Inkjet 028865

Included:

- Supervision software (with touch screen, keyboard and mouse)
- 1 hopper for mini straws
- 1 hopper for medium straws
- 1 ventilated receiving hopper
- 1 ink cartridge with the compact inkjet



IRIS Domino Ax350i

IRIS with Domino Ax350i 028864

Included:

- Supervision software (with touch screen, keyboard and mouse)
- 1 hopper for mini straws
- 1 hopper for medium straws
- 1 ventilated receiving hopper



Optional:

Ink solvent emission aspiration/filtration system 029140

For ventilated receiving hopper:
470 x 230 x 500 mm / 18.5 x 9.1 x 19.7 inches (LxWxH)
Weight: 15.5 kg / 33.1 lbs



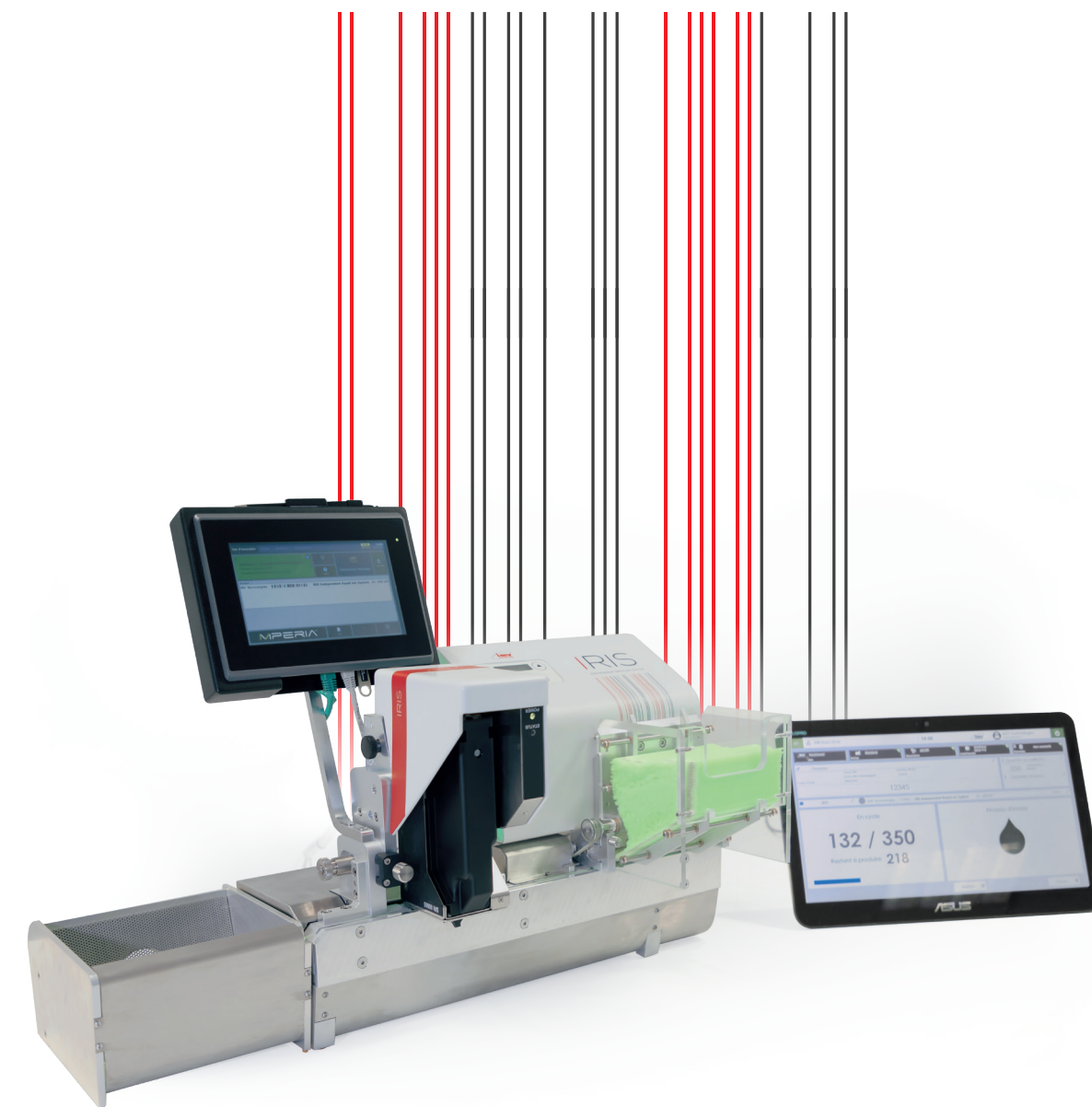
IMV TECHNOLOGIES. FOR LIFE.



www.imv-technologies.com



Credit photo : jgg video - Octobre 2021



Plug-and-print!

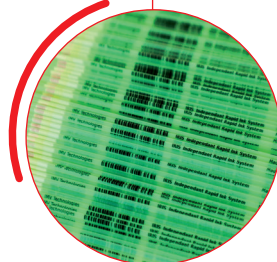
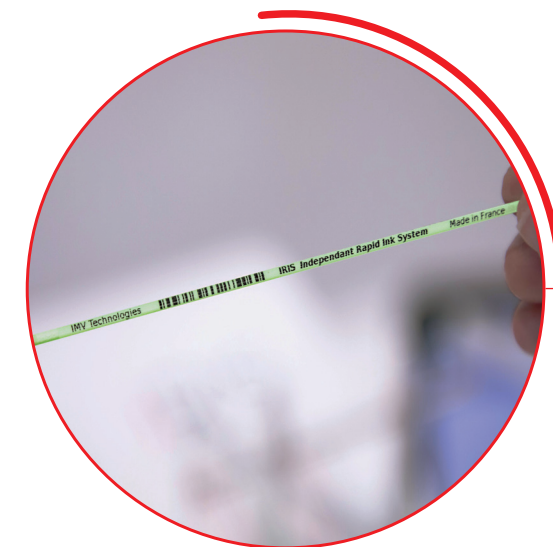


IMV TECHNOLOGIES. FOR LIFE.

Plug-and-print!

With IRIS, all laboratories can have access to traceability.
Ultra-compact and easy to use, IRIS combines high printing performance with ergonomic software.

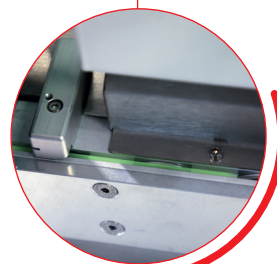
IRIS: quality, reliability and speed.



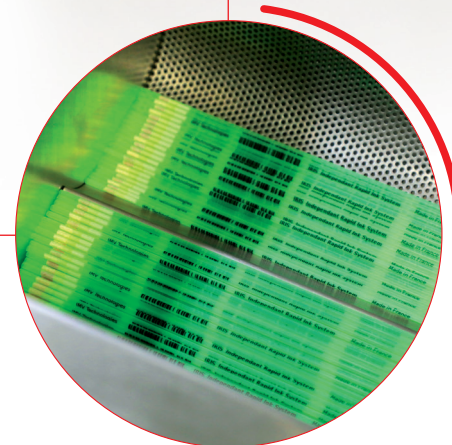
Sharp and high-contrast printing

Fast and reliable
High speed printing 18,000 straws/hr
Anti-jamming system

Stable distribution
Uniform printing



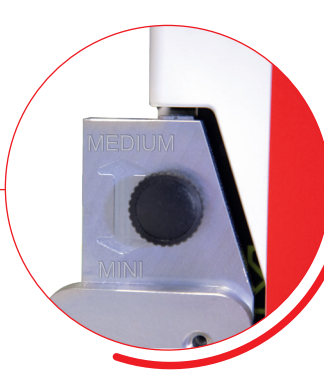
Ventilated receiving hopper
Ergonomic design of the receiving hopper facilitating the recovery of straws
Compatible with a solvent aspiration and filtration system (Optional)



Universal mini and medium straw printing

Print easily on:

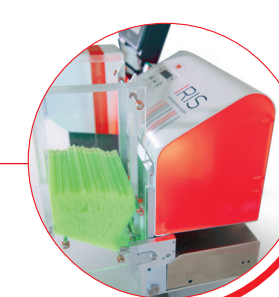
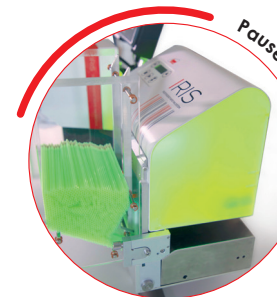
- mini straws
- medium straws
- identification rods
- embryo straws (Ref. 006300 & 005592)



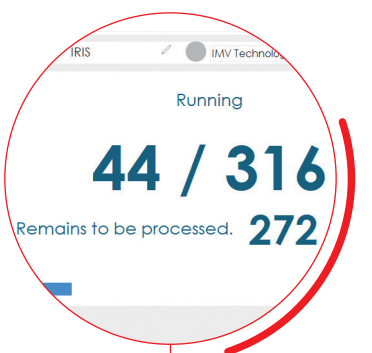
2 hoppers:

- Hopper for mini straws
- Hopper for medium straws

Printer status visible from a distance
Changes color to reflect its status



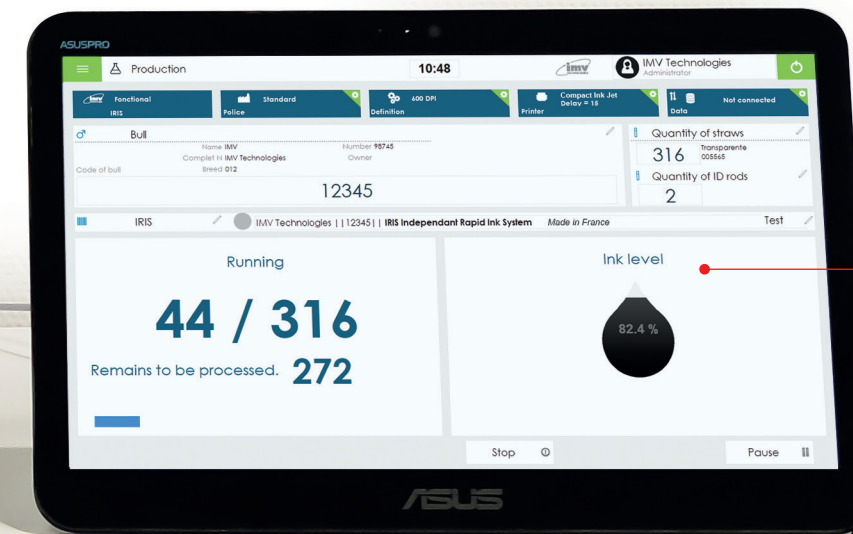
Integrated counter



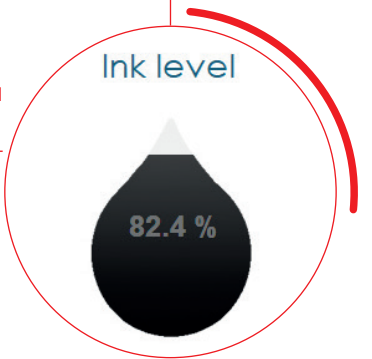
Various print formats possible
Printing fields customizable



Intuitive and connected control
Supervision software
Reliable counting of straws and identification rods
Compatible with eSMILE

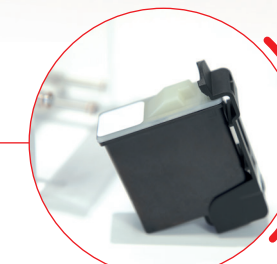
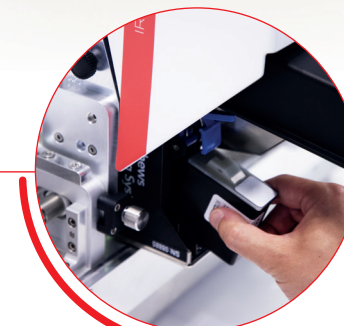


Ink level indicated



COMPACT
INKJET
INSIDE

Ultra-compact inkjet
No daily cleaning
Easy to use



Instant cartridge change
Nozzle built into the cartridge
Optimal quality in every print